



FINNISH SAUNA JF152

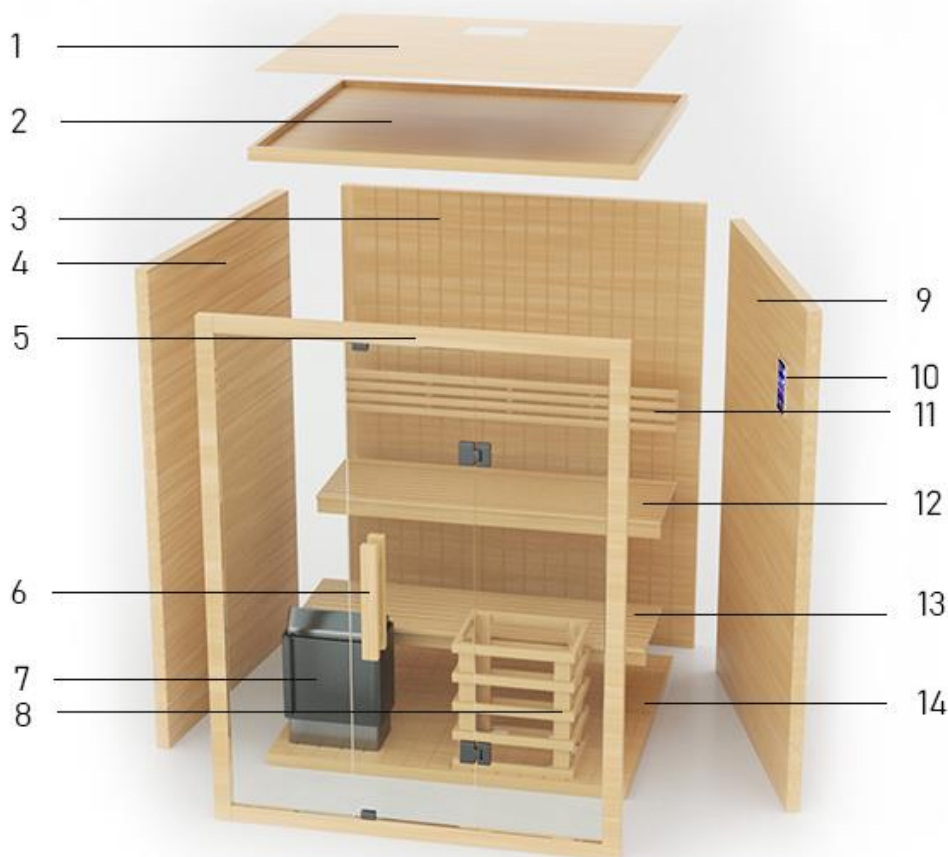
Specifications and assembly instructions

SPECIFICATIONS



Model	JF152
Dimensions	1500x1200x2000 mm
Number of persons	4
Wood	Finnish pine, 48 mm
Glass	Transparent, tempered, 8 mm
Hinges	INOX
Control	Control panel with buttons
Operating time	Up to 90 min
Temperature	Up to 90 °C
Ventilation	Yes
Connectivity	USB, Bluetooth, Radio, App
Lighting	LED RGB starry sky
Oven	4,5 kW, with thermostat, timer and volcanic stone
Connection	Single-phase: Schuko socket 230 V, 50 Hz, or conductor 3 x 4 mm ² and 25 A fuse or Three-phase: Euro socket 400 V; 50 Hz or conductor 5 x 2,5 mm ² and 3x16 A fuse
Weight	230 kg

COMPONENTS



- | | |
|--------------------------|------------------|
| 1 Cover plate | 8 Stove frame |
| 2 Ceiling plate | 9 Right side |
| 3 Back plate | 10 Control panel |
| 4 Left side | 11 Backrest |
| 5 Front plate with glass | 12 Upper bench |
| 6 Handle | 13 Lower bench |
| 7 Stove | 14 Bottom |

RECOMMENDED TOOLS



Screwdriver



Meter



Screwdriver



Screws



Water scale



Imbus key



A knife



A ladder

ASSEMBLY TIPS

Please remove the transport packaging and check that your sauna has been delivered complete and undamaged before starting assembly. At least two people are needed to assemble the sauna.



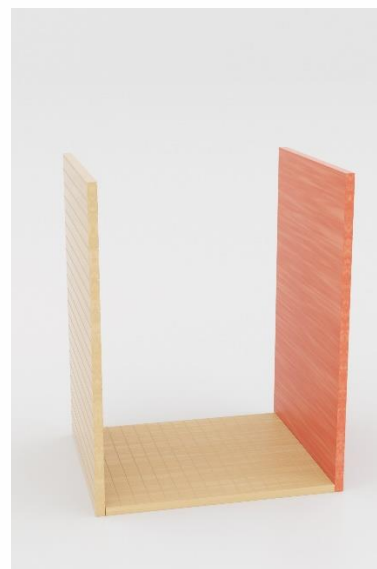
ASSEMBLY STEPS



1. Bottom plate



2. Left side



3. Right side



4. Backplate



5. Upper bench



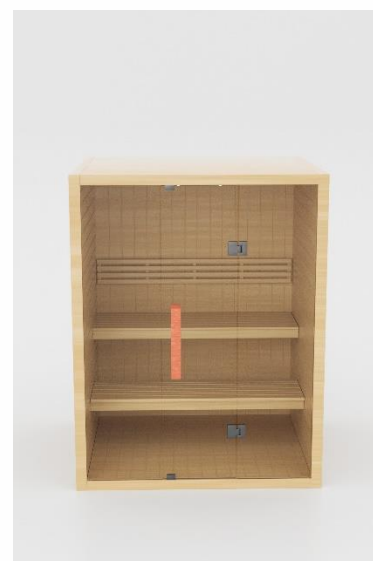
6. Lower bench



7. Front side with glass



8. Ceiling panel and cover plate



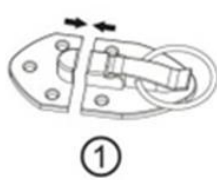
9. Handle



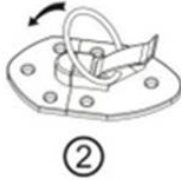


Stove and stove frame

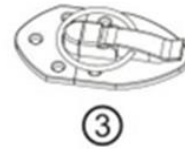
Installing the outer buckle



①



②



③

Connecting electrical components



1. Connect the blue UTP cable from the control panel to the sauna control unit.



2. Connect the power cables between the control unit and the stove.

* in case of ambiguity, call +38670 700 805.

Installation of hinges, handle and cover



1. Install the hinges - the soft parts must be next to the glass, on the inside of the hinges 2.



2. Install the handle, screws from the inside of the sauna.

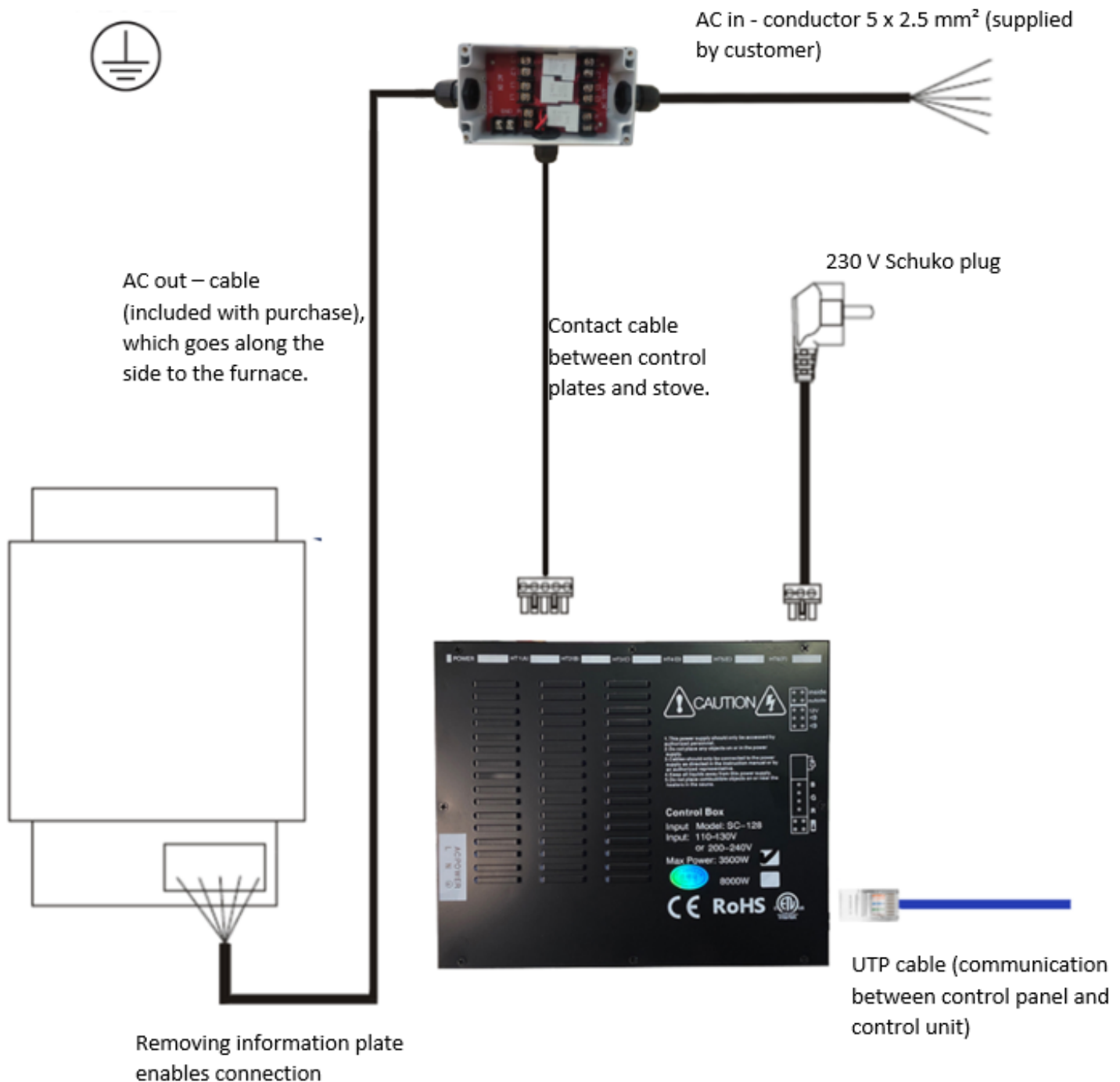


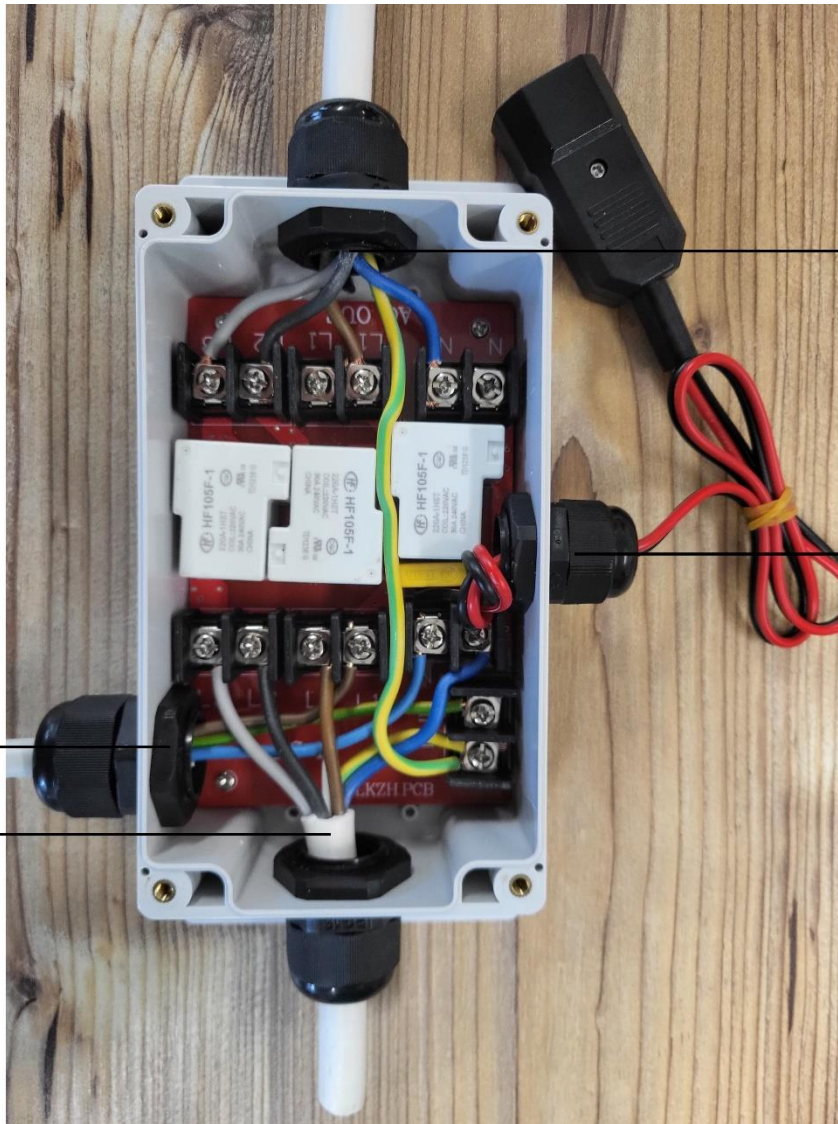
3. Install the cover plate



CONNECTING THE STOVE TO THE ELECTRICAL NETWORK

AC out is connected to the stove without grounding. (GRND)





Control unit power supply

Your line (IN):
3 x 4 mm² conductor
or
5 x 2.5 mm² conductor
(0)

Line or guide
in the stove (OUT):
conductor 3 x 4 mm²
or
conductor 5 x 2.5 mm²
(0)

Communication with the
control unit

WIRING DIAGRAM

